

CityStay



Where Luxury & Convenience Converge



Welcome to City Stay

A supreme residence conveying a lifestyle of exceptionality and luxury to outlast an era.





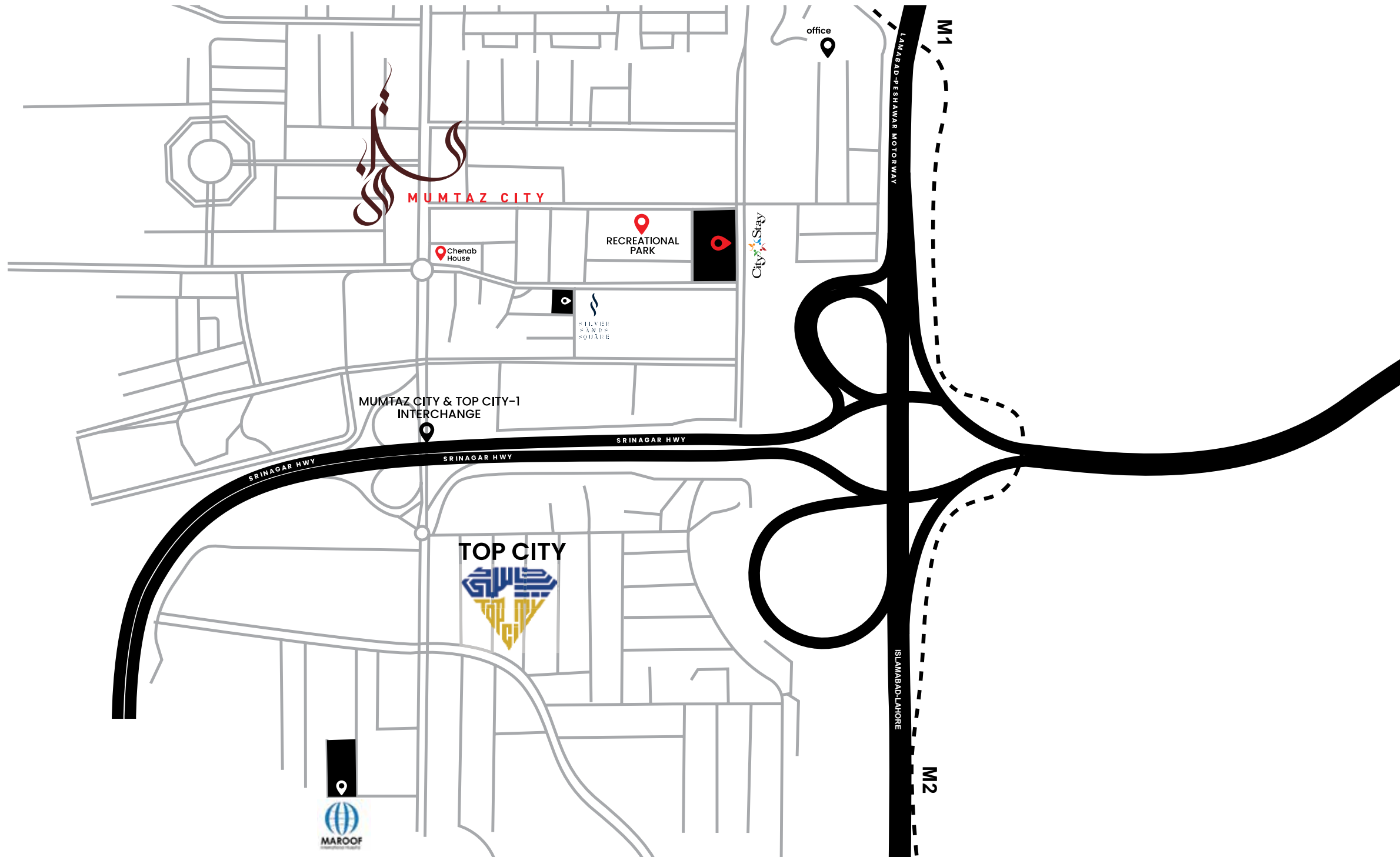
Serene Stay at City Stay

We chose Islamabad for our project as it is the second most beautiful capital in the world. Islamabad was thoughtfully planned and built to serve as the capital of Pakistan. It is known for its peaceful and serene environment which makes it an ideal setting for living.

The city is blessed with spectacular natural marvels along with its great infrastructure. Nature is the main charm of this town; Margalla hills surrounding the entire town with the scenic view of the whole twin city.



Your Home, Closer Than Ever



City Stay's Location Stay's Accessible:

City Stay is a carefully chosen complex renowned for its iconic and ultra-modern lifestyle that leaves you stunned with delight. It is situated in Mumtaz city, connecting numerous surrounding areas to be easily accessible, just five minutes away from the Islamabad International Airport while a two minutes drive to Maroof International Hospital. The intricate and ingenious thought process for the location has allowed us to have proximity to the motorways, M1 & M2, CPEC, and Rawalpindi Ring Road.



Play it off at City Stay

Time spent playing with children
is always fruitful





Get the lobby right and it will be the favorite spot for your guests to meet and greet.



A Living With An Ultra-Prime Design

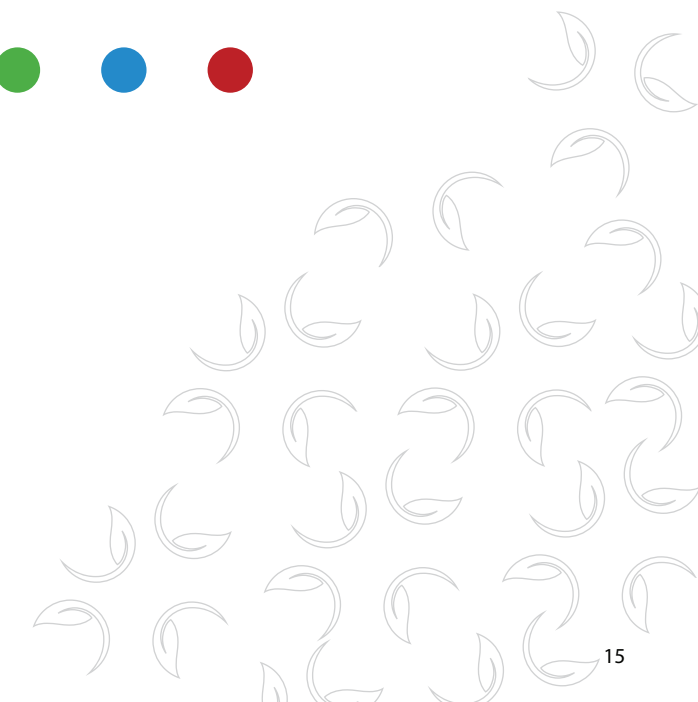
City Stay is an ultra-modern apartment complex that is spread over 22 kanals. The apartment complex is envisioned to provide a life of exceptionality to the community through fully modular architecture planned by our acclaimed and prestigious construction experts.





A Sustainable Way of Living at City Stay

Roof top park at City Stay offers a unique mind refreshing experience for the friends and families to connect. This complex has an environment that supports an eco-friendly and sustainable living due to 60% of plot area designated for soul-soothing greenery and rich flora.



AMENITIES



Coffee Shop



Gymnasium



Spa & Sauna



Day Care



Business Offices



Electric Charging



Day Dormitories



Laundry



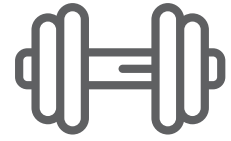
Mosque

Amenities You Desire, Under One Roof

The premium lifestyle of City Stay is offering a resident-friendly environment obtaining all the top-notch facilities, latest practices, and state-of-the-art smart technologies to present you with a life you had your heart on. We have an unmatched roof-top garden that offers an unrivaled space to unwind and conduct various outdoor/indoor activities.

City Stay claims to offer all the permeate amenities that you've ever imagined. The Four Towers are a vertical entity equipped with up-to-date amenities to provide its residents with an exclusive lifestyle like no other.





Gymnasium



Day Care



Coffee Shop



Spa & Sauna

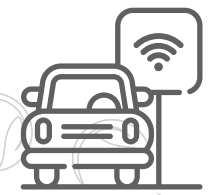
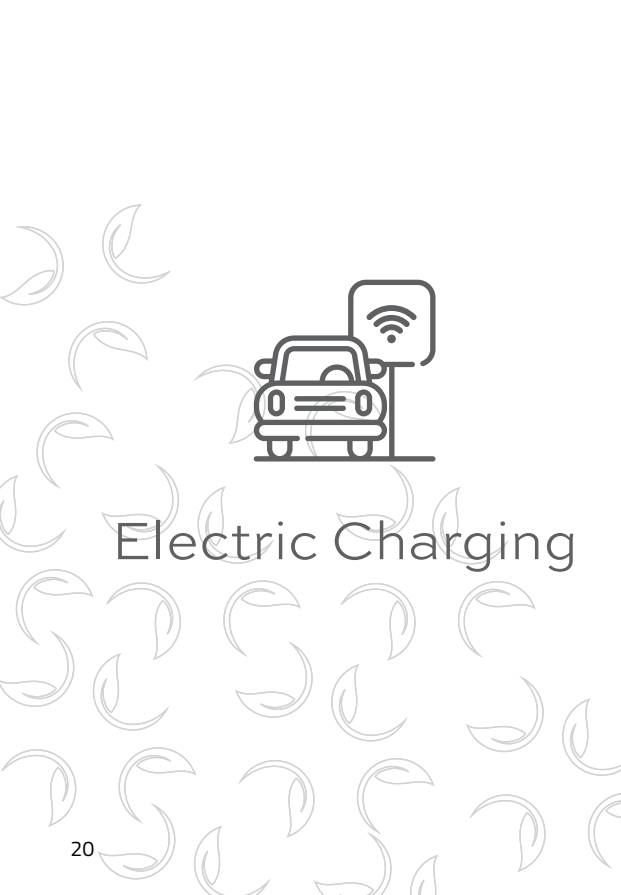




Business Offices



Day Dormitories



Electric Charging



Laundry



Apartments

City Stay comprises of 4 blocks that represent four trees (Maple, Oak, Pine and Palm); unique to the four seasons and they will be nurtured under one roof. The lavish futuristic apartments are exceedingly well designed and are flexible enough to provide all the necessities available at one-stop.

These prestigious towers are thoughtfully conceptualized, keeping the latest practices and state-of-the-art smart technologies in mind to offer the community a contemporary urban lifestyle. The four-blocks offer one, two, and three spacious bedroom apartments that meet the international standards of living.



Four Towers

 **Maple Tower**
Block A



 **Oak Tower**
Block B



 **Pine Tower**
Block C



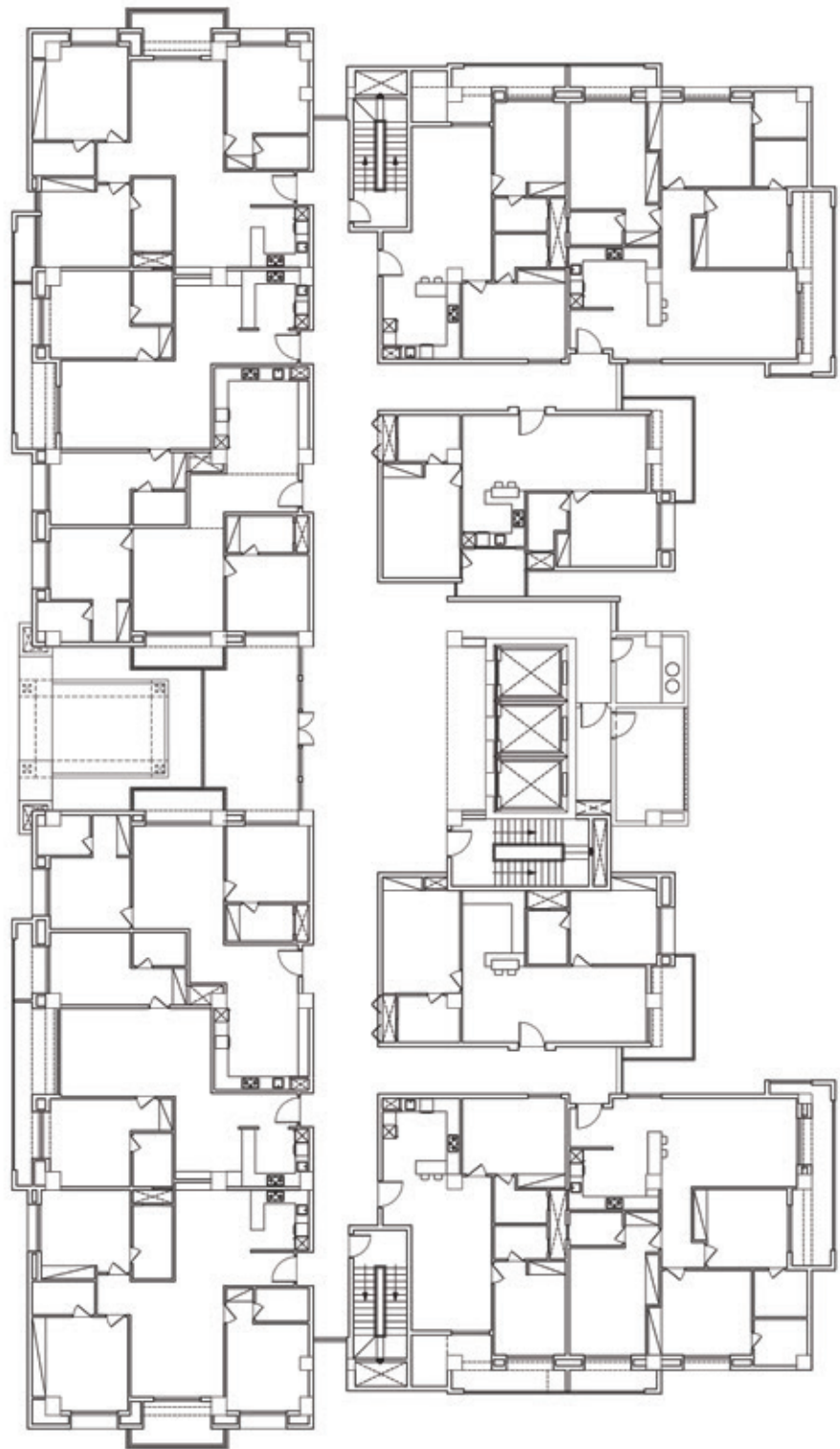
 **Palm Tower**
Block D



Four Seasons

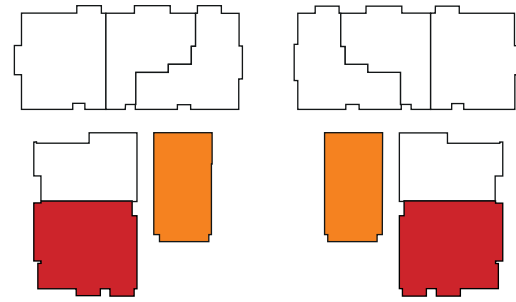


BLOCK A
2 Bed
1600 – 1850 sq. ft.
3 Bed
2130 – 2260 sq. ft





MAPLE TOWER - BLOCK A



A-01 & A-12

2 Bed Apartment: 1650 sq.ft.

1. Kitchen	:	9'-5" x 8'-4"
2. Lounge	:	27'-1" x 11'-4"
3. Bedroom # 1:	:	11'-7" x 17'-0"
4. Bathroom # 1:	:	9'-3" x 7'-0"
5. Balcony # 1 :	:	9'-5" x 7'-2"
6. Bedroom # 2:	:	13'-0" x 11'-0"
7. Bathroom # 2:	:	6'-0" x 8'-8"
8. Balcony # 2:	:	5'-0" Wide



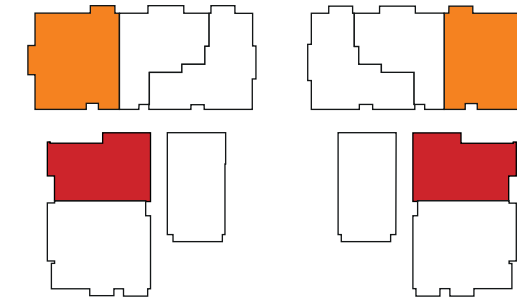
A-02 & A-11

3 Bed Apartment: 2260 sq.ft.

1. Kitchen	:	13'-5" x 9'-0"
2. Lounge	:	21'-10" x 13'-3"
3. Lobby	:	6'-6" x 5'-10"
4. Bedroom # 1:	:	14'-0" x 11'-9"
5. Bathroom # 1:	:	8'-0" x 6'-12"
6. Balcony # 1 :	:	6'-6" Wide
7. Bedroom # 2 :	:	13'-6" x 12'-8"
8. Bathroom # 2:	:	8'-0" x 6'-12"
9. Bedroom # 3:	:	11'-5" x 16'-0"
10. Bathroom # 3:	:	8'-0" x 5'-0"



MAPLE TOWER - BLOCK A



A-03 & A-10

2 Bed Apartment: 1600 sq.ft.

1. Kitchen/Dinette:	:	11'-9" x 11'-4"
2. Lounge	:	12'-2" x 23'-0"
3. Bedroom # 1:	:	15'-6" x 11'-4"
4. Bathroom # 1:	:	8'-0" x 5'-0"
5. Bedroom # 2:	:	10'-9" x 14'-0"
6. Bathroom # 2:	:	8'-0" x 5'-0"
7. Balcony	:	5'-0" Wide



A-04 & A-09

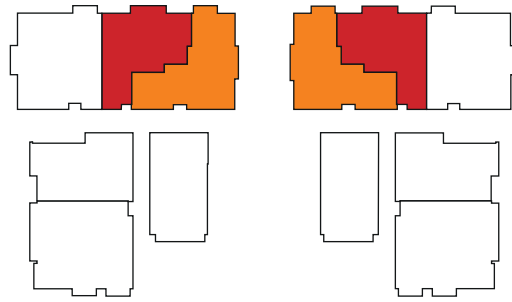
3 Bed Apartment: 2130 sq.ft.

1. Kitchen	:	8'-8" x 8'-1"
2. Lounge	:	14'-0" x 18'-3"
3. Dining	:	11'-4" x 8'-12"
4. Balcony	:	7'-0" Wide
5. Bedroom # 1:	:	13'-4" x 13'-3"
6. Bathroom # 1:	:	6'-0" x 11'-0"
7. Bedroom # 2:	:	14'-4" x 14'-0"
8. Bathroom # 2:	:	9'-4" x 5'-0"
9. Bedroom # 3:	:	12'-4" x 13'-0"
10. Bathroom # 3:	:	8'-0" x 5'-0"





MAPLE TOWER - BLOCK A



A-05 & A-08

2 Bed Apartment: 1850 sq.ft.

1. Kitchen	:	10'-0" x 8'-8"
2. Lounge	:	22'-6" x 13'-2"
3. Dining	:	10'-0" x 8'-8"
4. Bedroom # 1:		12'-0" x 13'-2"
5. Bathroom # 1:		6'-0" x 8'-0"
6. Bedroom # 2:		12'-0" x 10'-10"
7. Bathroom # 2:		8'-0" x 5'-0"

A-06 & A-07

2 Bed Apartment: 1650 sq.ft.

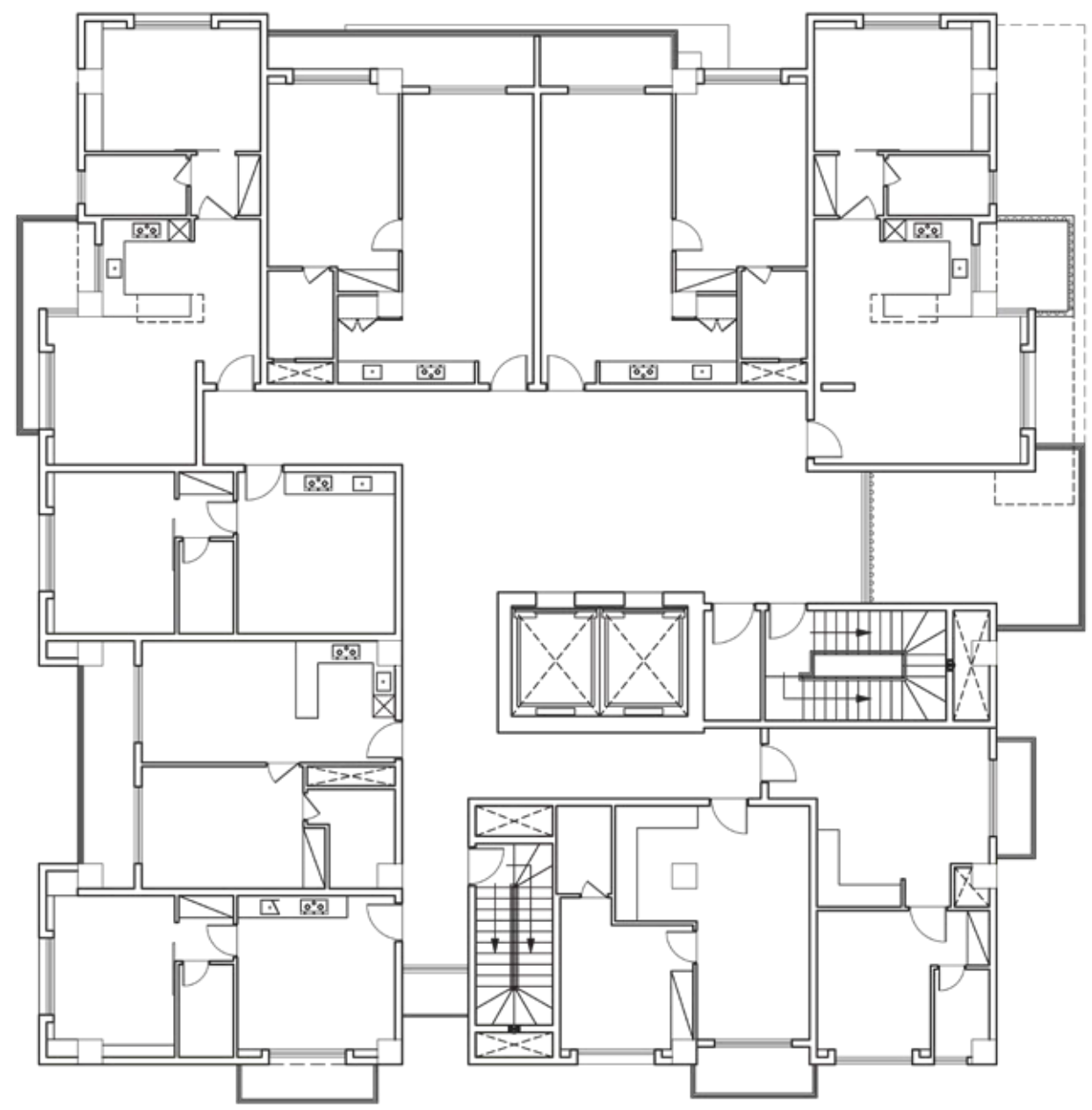
1. Kitchen/Dining:	:	14'-1" x 15'-11"
2. Lounge	:	13'-8" x 15'-5"
3. Balcony	:	5'-0" Wide
4. Bedroom # 1:		12'-0" x 10'-8"
5. Bathroom # 1:		8'-0" x 6'-0"
6. Bedroom # 2:		12'-4" x 11'-5"
7. Bathroom # 2:		10'-0" x 5'-6"



Bring Your Dreams to Reality, Today

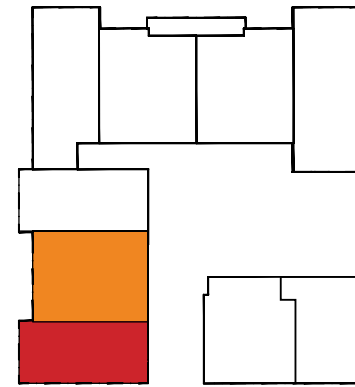


BLOCK B
1 Bed
825 - 1150 sq. ft.





OAK TOWER - BLOCK B



B-13

1 Bed Apartment: 875 sq.ft.

1. Bedroom	:	11'-0" x 14'-9"
2. Bathroom	:	5'-0" x 8'-5"
3. Lounge/Kitchenette:		14'-4" x 14'-9"
4. Balcony	:	5'-0" Wide



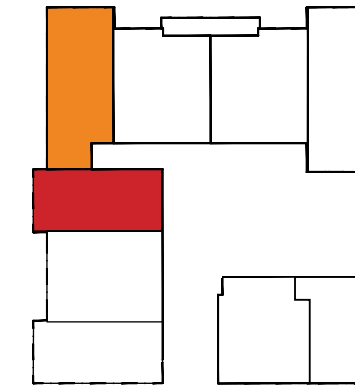
B-14

1 Bed Apartment: 1050 sq.ft.

1. Bedroom	:	14'-0" x 11'-1"
2. Bathroom	:	6'-0" x 11'-1"
3. Lounge	:	14'-0" x 11'-1"
4. Kitchenette	:	9'-0" x 11'-1"
5. Balcony	:	5'-10" Wide



OAK TOWER - BLOCK B



B-15

1 Bed Apartment: 825 sq.ft.

1. Bedroom	:	11'-0" x 14'-9"
2. Bathroom	:	5'-0" x 8'-5"
3. Lounge/Kitchenette:		14'-4" x 14'-9"



B-16

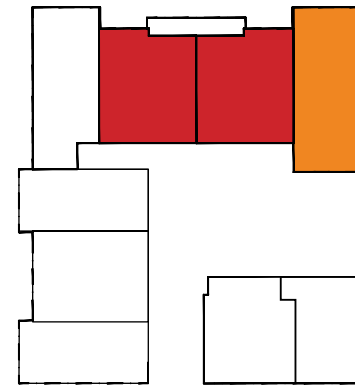
1 Bed Apartment: 1090 sq.ft.

1. Bedroom	:	14'-4" x 11'-0"
2. Bathroom	:	9'-3" x 5'-6"
3. Lounge	:	13'-0" x 13'-6"
4. Kitchenette	:	8'-0" x 8'-10"
5. Balcony	:	5'-0" Wide





OAK TOWER - BLOCK B



● B-17 & B-18

1 Bed Apartment: 1125 sq.ft.

1. Bedroom	: 11'-11" x 16'-1"
2. Bathroom	: 6'-0" x 9'-0"
3. Lounge	: 11'-11" x 15'-4"
4. Kitchenette	: 12'-6" x 5'-0"



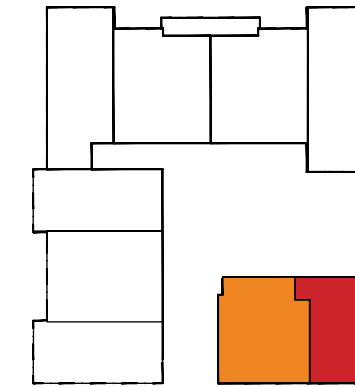
● B-19

1 Bed Apartment: 1150 sq.ft.

1. Bedroom	: 14'-4" x 11'-0"
2. Bathroom	: 9'-3" x 5'-6"
3. Lounge	: 18'-9" x 13'-6"
4. Kitchenette	: 8'-0" x 8'-10"
5. Balcony	: 5' Wide



OAK TOWER - BLOCK B



● B-20

1 Bed Apartment: 900 sq.ft.

1. Bedroom	: 10'-4" x 13'-4"
2. Bathroom	: 5'-0" x 8'-0"
3. Lounge	: 15'-8" x 11'-3"
4. Kitchenette	: 8'-9" x 3'-0"



● B-21

1 Bed Apartment: 925 sq.ft.

1. Bedroom	: 12'-1" x 11'-4"
2. Bathroom	: 5'-0" x 8'-4"
3. Lounge	: 10'-3" x 21'-3"
4. Kitchenette	: 7'-6" x 10'-6"
5. Balcony	: 4'-7" Wide



About the Group

City Stay - A high-rise luxury city developed by Potohar Builders & Savoy Group.



Leading Groups of the Real Estate Industry

Potohar Builders and Savoy Group have come together to bring ease to your life. We have devoted ourselves to transform your lifestyle into an ideal luxurious living. The reputation we have built in the real estate industry is due to our endeavored and determined efforts of decades. City Stay is a successful project of Potohar Builders and Savoy Group, the leading real estate groups.

Potohar Builders started its journey towards excellence in 1984. We have delivered landmark construction projects across diverse sectors such as residential homes, commercial malls, apartment buildings, and healthcare projects all across Pakistan. Our name is trusted by uncountable satisfied customers that relish the benefits of professional services to deliver structured and successful construction projects.

Savoy Group has a proven track record of delivering large-scale development projects comprising of residential complexes and commercial projects all across Pakistan. It has shaped new lifestyles with a focus on design excellence, build quality, and timely delivery. As a result, customers and investors have shared in its success and experienced huge capital growth.





Our World-Class Projects

Residential Projects



Silver Oaks



Rhodium Residencia



Elan Square

Commercial Projects



Rohsan Center



Silver Sands Square

Health Care Projects



Maroof International Hospital



Bewal International Hospital



Resham Barkat Memorial Hospital



Residential Projects



Savoy Residences

Commercial Projects



Mandeer Square



Silver Square



Savoy Arcade

اک پرسکون زندگی ہمارا وعدہ۔



📍 **Head Office :**

Potohar Builders

6-C, Faiz Arcade,
Jinnah Super, F-7 Markaz,
Islamabad, Pakistan.

☎ +92 51 111 111 011

✉ info@potohar.co

contact@potohar.co

📍 **Head Office :**

Savoy Group

Savoy Arcade Suite # 101,
1st Floor, Hilal Road,
F-11 Markaz, Islamabad,
Pakistan.

☎ +92 51 210 2273

+92 51 8444 660

📍 **Site Address:** Plot MC-08, Allama Iqbal Avenue, Indus Block, Mumtaz City



www.citystay.com.pk



info@citystay.com.pk



[citystay.mc](https://www.facebook.com/citystay.mc)



[citystay.mc](https://www.instagram.com/citystay.mc)

Disclaimer: All pictures, plan, layouts, information data and details included in this brochure are indicative only and may change at any time up to the final "as Built" status in accordance with final designs of the project and regulatory approvals and planning permissions.